



## WHEELS ON WAIRAU

155 Wairau Road ph: 444 5756  
www.wheelsonwairau.co.nz



**CLUBS**  
NEW ZEALAND INC



## Birko Bingo

**Thursday 11 May (Tomorrow)**



**7pm first game**

Caller: Kevin "Scratchy" George

Entry restricted to 18 years & over

## On The Greens

Wednesday 10 May - 10am Club Day - **Fish & Chips Day (AC)**

Saturday 13 May - 1pm Club Afternoon (AC - mufti)

Wednesday 17 May - 10am Club Day

Saturday 20 May - **Closing Day & Prize Giving - see below for details**

## Inside This Weekend

**Friday 12 May – Club Night**

Raffles, Happy Hour, Club Membership Draw, Joker 500

Racing: Alexandra Park & Addington (Harness), Addington & Wanganui (Greyhounds) and Australia

Super Rugby\* - 7.35pm Blues v Cheetahs

**Saturday 13 May**

Racing: Rotorua & New Plymouth (Thoroughbreds) Winton (Harness) and Australia

NRL\* - 5pm Panthers v Warriors, 7.30pm Storm v Titans

Super Rugby\* - 7.35pm Crusaders v Hurricanes

**Sunday 14 May**

Racing: Invercargill (Thoroughbreds), Timaru (Harness), Manukau (Greyhounds) and Australia

NRL\* - 4pm Knights v Raiders, 6pm Roosters v Eels

\* viewing selection is dependent on the members.

## AGM 2017

The Birkenhead Bowling Club AGM is 10am Sunday 18 June 2017 and notices have been emailed and posted out to all members. It's now time to think about how you can assist the running to the club next season.

# Club Closing Day & Prize Giving

## Saturday 20 May 2017

### Mini Tournament (Single Entry, \$5 per player)

Two Bowl Triples, Cash Prizes

Names in by 12.15pm, starts 12.30pm

## Club Prize Giving

Commencing at 4.30pm

Family and Friends welcome

Dress: Members in Club Uniform or Whites

At the conclusion of Prize Giving nibbles will be available.



180 Mokoia Road, Birkenhead  
Open: Mon - Sun 7.00am - 10.00pm

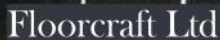


Emmie Swart Limited

Promotional Apparel & Products, Corporate Gifts  
Customised Team & Club Uniforms

"Let us turn your ideas into reality"

Ph: 419-0926 M: 0275 297-297 www.emmieswart.co.nz



Do It Once! Do It Right!!

- Specialists in Industrial & Commercial Floor Covering Solutions
- Eco Friendly
- Suppliers of all leading floor covering manufacturers

Contact Phone: 09 444 9797 Email: sales@floorcraft.co.nz



We provide a comprehensive integrated solution to your construction and maintenance requirements. Across a wide range of projects, our highly skilled team provides the experience, capacity, and reliability to deliver a great result every time.

Phone 496 0288 Office 4 Fred Thomas Drive, Takapuna



www.ugl.co.nz



**YOU**  
travel

YOU Travel Birkenhead  
Travel@youbirkenhead.co.nz

20 Birkenhead Avenue  
www.youbirkenhead.co.nz

**Galbraith PLUMBING & DRAINAGE Ltd**

100 years experience servicing Auckland's plumbing and drainage needs.

Plumbing and Drainage work - new, maintenance, domestic, commercial, renovation. Blocked drains - machines cleared. Stormwater and flooding. Sprouting and Roofing. Council defective drainage notices.

Call us today for a no obligation FREE quote!

**Ph 489-8002**

www.galbraithplumbing.co.nz



**BIRKENHEAD LICENSING TRUST**

**Barfoot & Thompson**

Birkenhead Branch  
24 Birkenhead Ave  
Phone 480-9029

Licensed under the REAA 2008



**William Beare**  
william@carpetmill.co.nz  
Office Ph 09 441 7447  
185 Archers Road  
Glenfield 0629

"If you're about to buy carpet, these guys are worth talking to!"



**Dils**  
for beautiful funerals

www.dils.co.nz



**Tim Roskrige**  
Residential Sales  
M: 0274 923 125 Birkenhead 09 480 9029  
P: 09 418 3846 E: t.roskrige@barfoot.co.nz

Birkenhead 24 Birkenhead Avenue  
P.O. Box 34027 Birkenhead Fax: 09 480 9028 www.barfoot.co.nz



**The GOOD HOME**  
PUBLIC HOUSE & RESTAURANT  
83 BIRKENHEAD AVE  
IT'S NOT A HOUSE IT'S A HOME



**BIRKENHEAD**  
Recreation Drive  
PH: 418 2424  
Proudly Supporting  
Bowls Birkenhead  
www.birkenheadrsa.com

# Today's Club Draws \$400 & \$150 Joker 500 Draw - only 16 cards left

## Rose Bowl is Birkenhead's

By Jerome Rusk

The Birkenhead Bees are this season's Northern Region Junior Interclub Champions. After qualifying to represent North Harbour, the Bees travelled up the northern highway to Hikurangi Bowling Club (christened as the club with the best biscuits by many of the players), found 10mins north of Whangarei where they took on the champions from Counties, Auckland, Northland and Far North. Pukekohe, Balmoral, Arapohue and Opononi were their foes and over a full days play consisting of 1 hour and 20 minute battles, Birkenhead were eventually anointed Champions, emulating the 2012-13 Junior Bees, but this years team are heaps better.

Once again the Triples team featuring the Belcher Bombers, led the way. Jerry at lead and Jacqui at 2, continued their outstanding form, setting the platform for team captain J. J. Heath to shine. They won 3 of their 4 games with the one loss being their first of the entire Interclub season. Amazing! 9 points collected for the team.

Lead Garry Wallace and team funny guy Robbie Henson also stepped up when needed to register 2 wins from their 4 matches, with Henson's focus strengthened by the knowledge he had a dozen beers cooling in his chilly bin for after the days play. 6 points to the tally.

Jerome Rusk in the singles captured 2 wins and a draw from his quartet of battles including a 19-18 win in his first game, coming from 4-18 down to get up. To balance that out however he let rip a wrong bias and that took all the gloss off his comeback win. Nah not really but he insists he should stop doing those. 7 more points to the Bees and a grand total of 22 points and the overall top total for the day! Second equal were Pukekohe and Arapohue on 19.

At the after match function, Jimmy laid out a touching speech (teary eyes were evident), but Henson's challenge to him to do a celebratory nudey run around the green was quickly shut down, much to the disappointment of a few of the females in attendance. Then it was off home to The Shore as newly crowned Champions of the World... we'll sort of. A special shout out to our tireless management team of Dale and Adele Ineson, who have been the backbone of the team. Thank you to Ruth Lynch and Gary Beer for their support up north. Thank you to the Club for the continual backing and a special thumbs up to Jimmy Jandel Heath for his organisation skills and supreme Captancy. This is Jimmy's final year in the Junior ranks. He will be missed. Bring on next year and may the Bees continue to conquer!



Mercedes Rose Bowl winners 2017 - Birkenhead Bees. Standing: Dale Ineson (manager) Gary Wallace, Ruth Lynch (manager) Jerome Rusk, Jacqui Belcher, Jerry Belcher, Jimmy Heath front: Robbie Henson.

# Closing Day & Prize Giving Saturday 20 May



## WHEELS ON WAIRAU

155 Wairau Road ph: 444 5756  
www.wheelsonwairau.co.nz



LION BREWERIES



## Champ of Champ Singles

While our 1-5 year interclub team was up north winning the Mercedes Rose Bowl, Birkenhead's Club singles champions Adele Ineson and Jack Huriwai made the trek up to Manly Bowling Club chasing their respective BNH Champ of Champ singles titles. Unfortunately neither player made it through to the second day.

## The Club's Carpark & Car Parking

The Birkenhead Bowling Club has limited car parking and over the years has built a strong relationship with the Birkenhead Primary School enabling both property owners to utilise each other's limited parking resources together. Recently (three years) the Birkenhead Kindergarten has also been involved.

Primarily the Club's carpark is for use by members and visitors while frequenting the club. There are agreements in place between both the Birkenhead Primary School and the Birkenhead Kindergarten to allow parents to park for 10 minutes for the purpose of dropping off and picking up children. Please be mindful of children in the car park school mornings and afternoons.

The club also has use of the Kindergarten's parking during Sunday Tournaments. Wednesday Open Tournaments there are a limited number (9) of additional carparks available in the school carpark. All other times during school hours the Primary School carpark is a "towaway area".

We are also fortunate enough, with advanced notice, to be able to use inside the primary school gate for parking.

It is not fostering the relationships we have with our neighbours when ill-informed members take car park matters into their own hands.

Logan has told the club that from time to time they are parks available in the school carpark during school hours, but they must clear this with him prior to parking.

## Friday Club Nights

Merv "The Swerve" spins the raffles from around 4.30 onwards, Happy hour 5 - 6pm, Joker 500 on sale from 5pm, Club Membership Draw drawn between 5.30 - 6.30pm.

## Club Membership & Joker Draws

Club Membership & Joker 500 draws drawn Wednesdays & Fridays. Club membership drawn between 5pm - 6pm, and Fridays between 5.30 - 6.30pm. Members must be present at the draw to claim the prize.

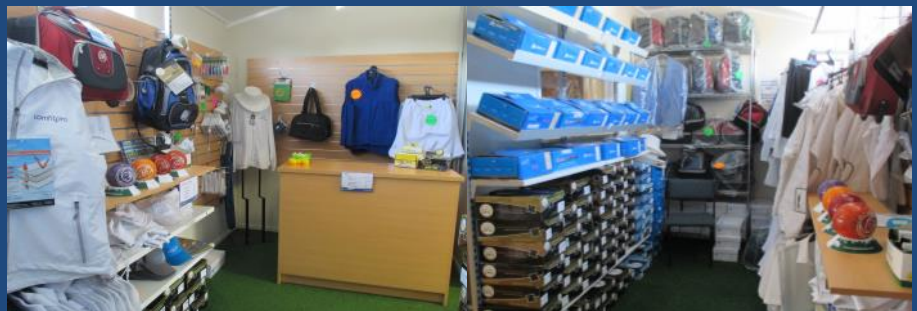
Joker 500, numbers on sale from 5pm—6pm. Purchase a number or numbers, a winning number is drawn at 6.15pm. The purchaser of that winning number selects a card from the Joker cabinet and receive the corresponding prize with the top prize being \$500 every Wednesday and Friday.

## Bowls Shop Birkenhead

Located inside the Club House (93 Mokoia Road, Birkenhead)

Aero Bowls , Comfitpro Bags , Comfitpro Footwear , Bowls Apparel ,  
Wet Weather Clothing , Bowls Accessories and more.....

Opening hours 3pm - 5pm daily or on request



Shop online at [www.bowlsbirkenhead.co.nz](http://www.bowlsbirkenhead.co.nz)



YOU Travel Birkenhead  
Travel@youbirkenhead.co.nz

20 Birkenhead Avenue  
www.youbirkenhead.co.nz

**Galbraith PLUMBING & DRAINAGE Ltd**

100 years experience servicing Auckland's plumbing and drainage needs.

Plumbing and Drainage work - new, maintenance, domestic, commercial, renovation. Blocked drains - machines cleared. Stormwater and flooding. Sprouting and Roofing. Council defective drainage notices.

Call us today for a no obligation FREE quote!

**Ph 489-8002**

www.galbraithplumbing.co.nz



**BIRKENHEAD LICENSING TRUST**

Birkenhead Branch  
24 Birkenhead Ave  
Phone 480-9029

**Barfoot & Thompson**  
Since 1923

Licensed under the REAA 2008



**William Beare**  
william@carpetmill.co.nz

Office Ph 09 441 7447  
185 Archers Road  
Glenfield 0629

"If you're about to buy carpet, these guys are worth talking to!"



**Dils**  
for beautiful funerals

www.dils.co.nz



**Tim Roskrige**  
Residential Sales

M: 0274 923 125 Birkenhead 09 480 9029  
P: 09 418 3846 E: t.roskrige@barfoot.co.nz

Birkenhead 24 Birkenhead Avenue  
P.O. Box 34027 Birkenhead Fax: 09 480 9028 www.barfoot.co.nz



**THE GOOD HOME BIRKENHEAD**

PUBLIC HOUSE & RESTAURANT 83 BIRKENHEAD AVE

IT'S NOT A HOUSE IT'S A HOME



**BIRKENHEAD**  
Recreation Drive  
PH: 418 2424  
Proudly Supporting  
Bowls Birkenhead  
www.birkenheadrsa.com

# SKY SURVIVOR

NRL #1 (White selection forms)

NRL #2 (Green selection forms) starts Round 10

Round 10 selections close 6.30pm Thursday 11 May

## Updated BNH Centre Dates

The latest list of BNH Centre dates received, note that some differ from those previously published by the Centre.

**BNH Champion of Champion Fours** - 13<sup>th</sup> – 14<sup>th</sup> May 2017

**BNH Men's 1-8 Years Fours, BNH Women's 1-8 Years Fours** - 13<sup>th</sup> – 14<sup>th</sup> May 2017

**BNH Men's 5 Years & Under Singles, BNH Women's 5 Years & Under Singles** - 20<sup>th</sup> – 21<sup>st</sup> May 2017

**BNH Junior Champion of Champion Singles** - 27<sup>th</sup> – 28<sup>th</sup> May 2017

**BNH Open 2-4-2 Pairs** - 10<sup>th</sup> – 11<sup>th</sup> June 2017

Entries close with Birkenhead Club Secretary 5pm Sunday 28<sup>th</sup> May 2017

## No Bee Express

There will be no Bee Express Wednesday 17 May due to logistical reasons.

## Spotlight on Sponsors

This week we put the spotlight on "The Birkenhead Licensing Trust". Although not a sponsor, but with the Trust's support over the years the club has benefited from many grants.

Source <http://www.birkenheadlicensingtrust.org.nz>

The Trust is a net proceeds-committee of the Lion Foundation and is responsible for approving grant funding to the local community groups in Birkenhead and surrounding areas from gaming funds generated by Lion Foundation.

The Birkenhead Licensing Trust was established in 1967 after voters decided that the Birkenhead Council area should change from 'dry' to 'wet' under the control of a licensing trust.

In 1970 the Birkenhead Trust Hotel was opened, with catering facilities designed to cater for all locals.

A period of expansion was followed by the economic slump of the late 1980s, the recipe for a loss-making enterprise. In 1992 the trust hotel complex was sold and only the wholesale outlet retained.

The Birkenhead Licensing Trust then sat for a number of years, accumulating revenue through the wholesale outlet and distributing interest accrued to local community groups. Meanwhile local licensing reins were loosened, allowing other operators to apply for licenses.

In the interim the Trust sought other suitable sites. In 2002 the Slipp Inn Pub had been opened by Allen Vaughan, who had a long history with Lion Breweries. In 2006 the Trust approached Mr Vaughan with an offer to buy the Slipp Inn, as it seemed a good fit for several reasons: the Trust is a net-proceeds committee of the Lion Foundation; grant funding to the local community comes from funds generated by Lion Foundation; the Trust was already the pub's landlord; the pub fitted the family-friendly ideal of the Trust; and the gambling facility was a source of revenue. The Pub recently undertook extensive renovations and was reborn as "The Good Home Birkenhead"

But, you ask, what is the difference between a Trust operation and a private or brewery-owned enterprise? Well, all profits from bar and restaurant sales and gaming proceeds are distributed in the local community through the Lion Foundation, rather than going into a big national pool for distribution nationally.

As Mr Vaughan points out, "The Trust does a lot of good in the community, it is not self-rewarding or ruled by self-interest, there are no paid directorships, and all six trustees are chosen by the electorate in the local body elections. As a result close to \$1 million annually has gone back into the community in recent years."

The Trust also owns the Glenfield pub Inn Field; revenues go back into the Birkenhead, Glenfield and Northcote areas from both establishments.

